

Illuminate Live!

UF/IFAS Extension
Caribbean Pest Diagnostic Network

June 14, 2010

Introduction / Training

What is Elluminate Live! ?

Elluminate *Live!* is a web conferencing system that allows groups to meet, present, and collaborate.

What can we do with Elluminate Live! ?

Participants in an Elluminate Live! session can ...

- have discussions using voice or text chat
- write, draw, and paste images on a shared whiteboard
- present materials imported from PowerPoint
- conduct polls and give quizzes
- simultaneously view web pages, video, and other multimedia
- use breakout rooms to work in smaller groups
- view or share documents or software running on any participant's computer
- record sessions for later viewing or review

What do I need to use Elluminate Live! ?

The only equipment required to participate in an Elluminate session is a computer with a connection to the Internet.

For audio discussions, those speaking will need a microphone, preferably a USB headset with noise cancellation.

How can a Moderator use Elluminate Live! ?

Moderators can set up Elluminate Live! sessions for ...

- hosting guest speakers
- holding virtual office hours for collaboration with colleagues
- leading diagnostic review sessions
- teaching class sessions online

Moderators can also create Elluminate Live! sessions for participants to ...

- work in study groups
- complete peer review activities
- collaborate on group projects

How do I get Elluminate Live! ?

[Support and Installation](#)

Elluminate Live! Setup

Elluminate Technical Support

First Time Users

Step 1 - Get the required software

✓ **Congratulations, you appear to have the required software to launch Elluminate Live!**

Java version you are running:

1.6.0_18 Sun Microsystems Inc.

Detailed pre-requisite information can be found [here](#).

Step 2 - Complete your setup

Elluminate provides a Configuration Room that can be used to test your connection, settings, and configure your audio. *This step is optional.*

Note: When joining an Elluminate *Live!* session for the first time you may see a security dialog box asking you to confirm that the application's digital signature is correct. Click "Run" to continue.

Step 3 - Learn more about Elluminate *Live!*

- Online Orientation
- Quick Reference Guides
- Recorded Introduction

Visit our Support Portal to access:

- Knowledge Base and FAQs
- Information on Elluminate's Products - Elluminate *Live!*[®], *Publish!*[™], *Plan!*[™] Elluminate VCS[™]
- Web ticket submission form
- Status of your previous ticket(s)

SUPPORT PORTAL

- Download Sun Java
- Java Accessibility Bridge
- Subscribe to Elluminate Email

read our SUPPORT TESTIMONIALS

Eliminate Live!

Participant Instruction

How do I Learn how to use this tool?

For instructions on how to use Eliminate Live! tools you may:

- Review [Recorded Training and Quick Reference Guides and User Guides](#)
- Contact the [Eliminate Support Center](#) which includes Knowledgebase, Phone Help, and Live Chat assistance.

Elluminate Live!

Moderator Instruction

How do I Learn how to use this tool?

For instructions on how to use Elluminate Live! Tools you may:

- Register for [Live Online Training](#) regularly provided by Elluminate Inc.
- Review [Recorded Training and Quick Reference Guides](#) **for moderators** (in [French, Spanish and Portuguese](#))
- Refer to the [Elluminate Moderator's Guides](#) for instructions on how to use Elluminate Live! Tools
- All Elluminate Live! [Product Training Resources](#)
- Contact the [Elluminate Support Center](#) which includes a Knowledgebase, Phone Help, and Live Chat assistance.

Elluminate Live!

Orientation

Spanish version

Welcome to the Elluminate Live!® V9.5 and Higher Orientation

This orientation session introduces you to the Elluminate *Live!* environment.

It will take approximately 5 -10 minutes to complete.

Use the buttons at the top right corner to navigate through the pages.

Orientation Contents

This orientation session is organized into the following topics:

1. How to Test Your Audio
2. How to Set Your Connection Speed
3. Elluminate *Live!* Main Environment
4. Raising Your Hand
5. Using Audio to Talk
6. Sending Chat Messages
7. Using the Whiteboard
8. Where to Find More Information

Illuminate Live!

What's Next ?

- Review the Illuminate Live! Participant interface

The Participant Interface

The screenshot displays the Elluminate Live! interface for a session titled "ELLUMINATE TRAINING ROOM 1". The interface is divided into several functional areas:

- Participants Window:** Located on the left, it lists six participants: Amanda Reed (M...), Deborah, Elizabeth, Fred (Me, Profile), John, and Mike. It includes icons for muting/unmuting and a "6 Participants" indicator.
- Chat Window:** Below the participants list, it shows a message: "Joined on June 2, 2009 at 5:39 PM". It features a "Show" dropdown set to "All", a text input field, and a "Send" button with a dropdown set to "This Room".
- Audio Window:** At the bottom left, it contains two volume sliders. The top slider is labeled "Talk" and has a microphone icon. The bottom slider has a speaker icon.
- Whiteboard Window:** The main area on the right is titled "Whiteboard - Main Room". It displays a "World Map" with various countries highlighted in different colors. A toolbar on the left of the map includes icons for erasing, drawing, and navigating. A "Follow Moderator" checkbox is visible in the top right of the whiteboard area.

At the bottom right of the interface, a status bar indicates: "In session for 8 hours, 46 minutes."

Whiteboard Window

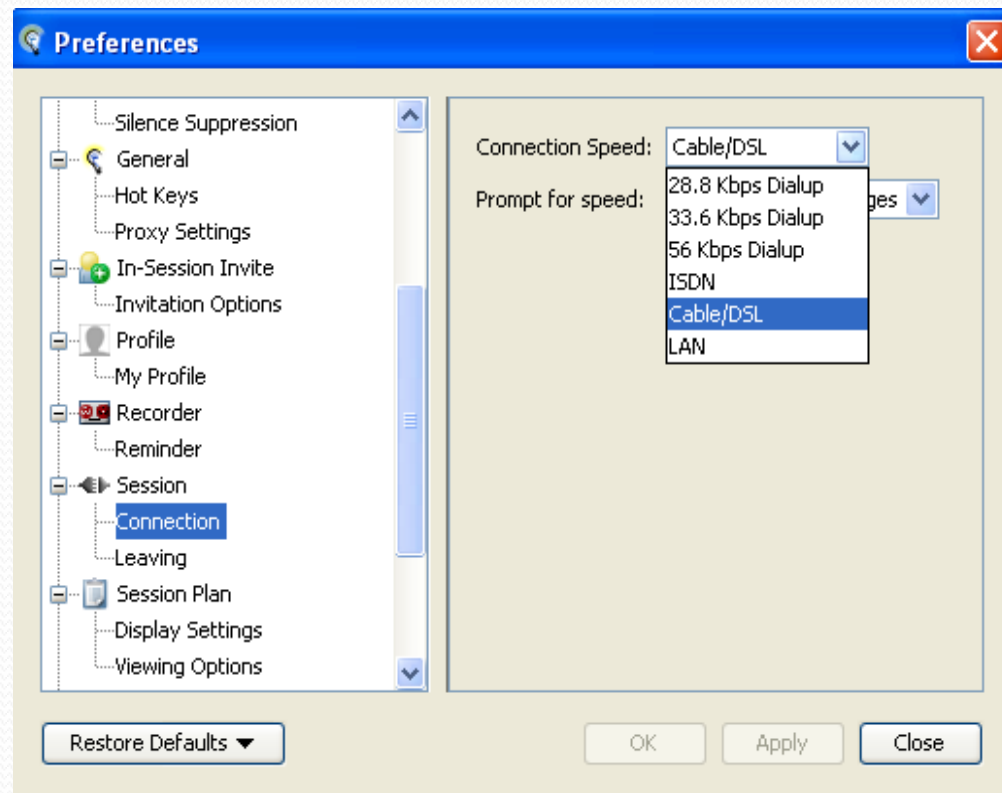
Participant Window

Chat Window

Audio Window

Connection Speed

- Set your Connection Speed
 - PC: Tools → Preferences → Session Connection
 - Mac: Elluminate *Live!* → Preferences → Session Connection



Participants Window


- Raise/Lower Hand
- Emoticons
- Polling
- Step Away

The screenshot shows a 'Participants' window with a blue title bar. The window contains a list of participants with columns for hand-raising status, emoticons, and other controls. The participants listed are Amanda Reed (Moderator, Me, Profile), Mike, Deborah, John, and Elizabeth. The status bar at the bottom indicates '3 of 5 Hands Raised' and includes icons for hand-raising, emoticons, and a 'Step Away' button.

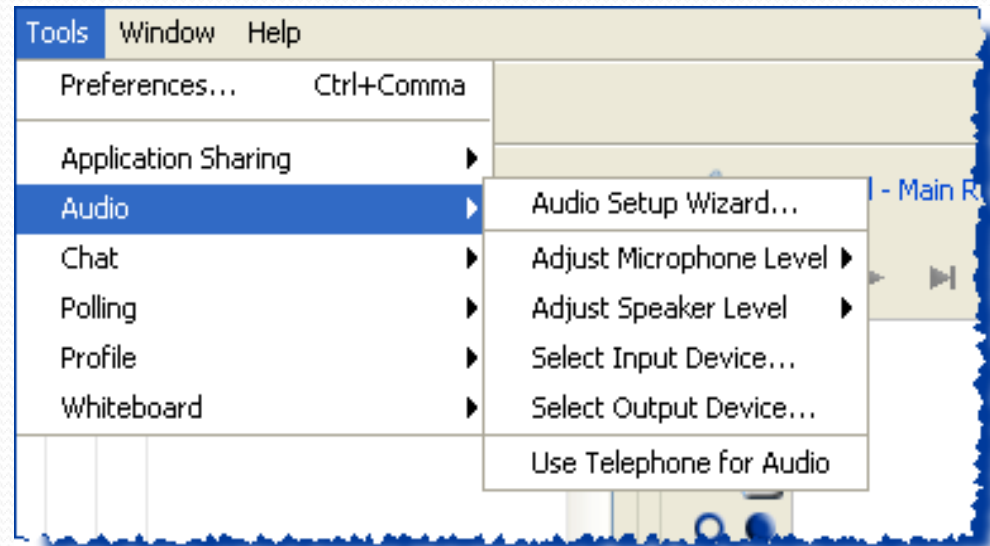
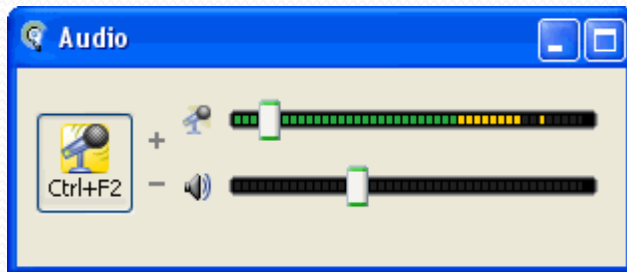
Hand	Emoticon	Hand	Hand	Hand	Hand	Name
						Amanda Reed (Moderator, Me, Profile)
1	✓	👤	💬	✍️	💻	Mike
2	✓	👤	💬	✍️	💻	Deborah
3	✗	👤	💬	✍️	💻	John
	✓	👤	💬	✍️	💻	Elizabeth

3 of 5
Hands Raised

Audio

- Permission to use Microphone 
- Audio Setup Utility
 - Tools → Audio → Audio Setup Wizard

- Optimal Microphone Setting



Chat Window

- Permission to use Chat

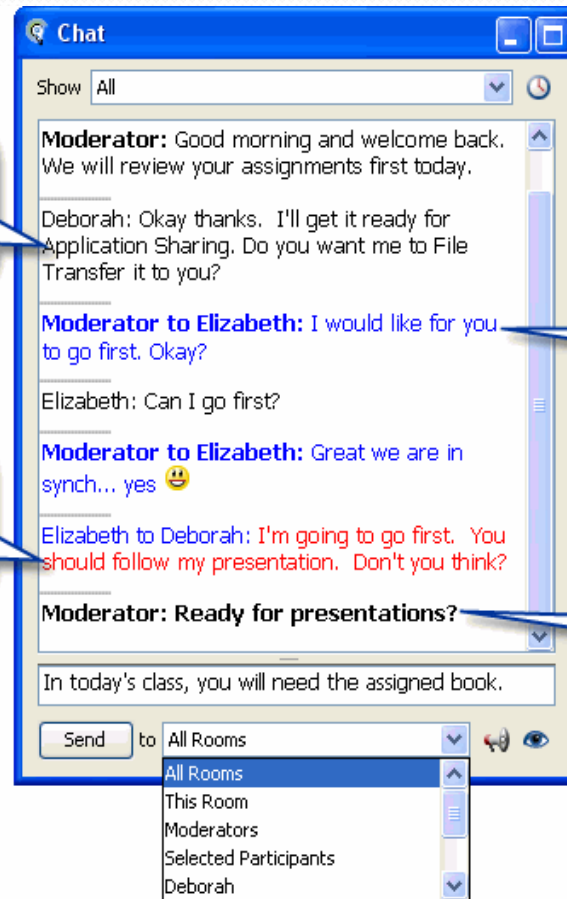


- Send a Text Message

- Public
- Private

Black text =
public message

Red text =
participant to
participant
private message



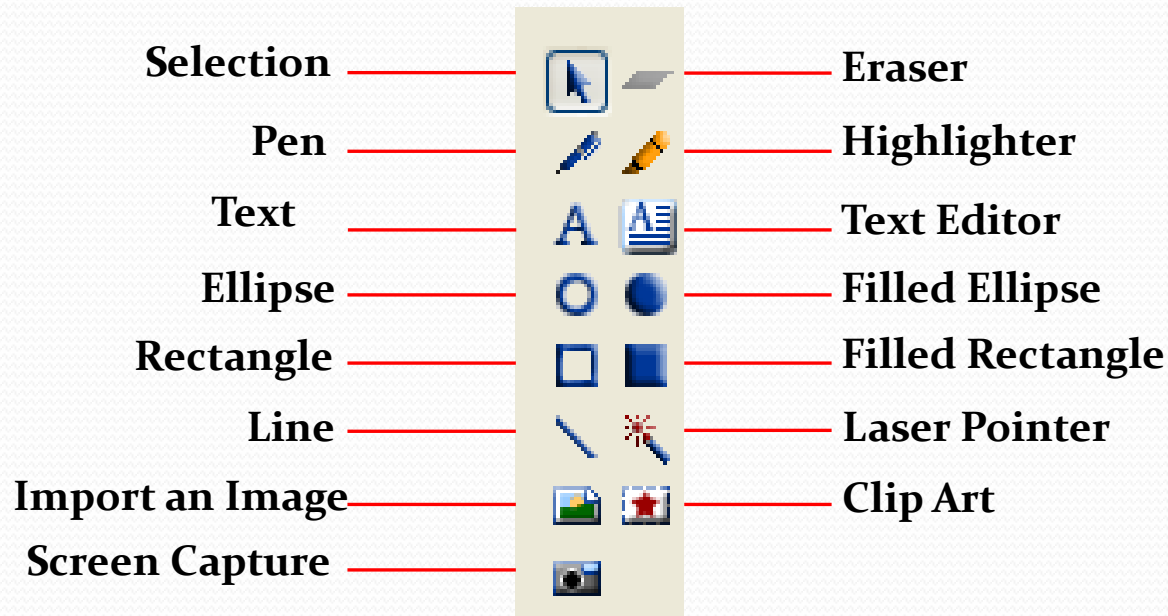
Blue text = private
message sent to
you or received

**Black text =
message sent as
an announcement**

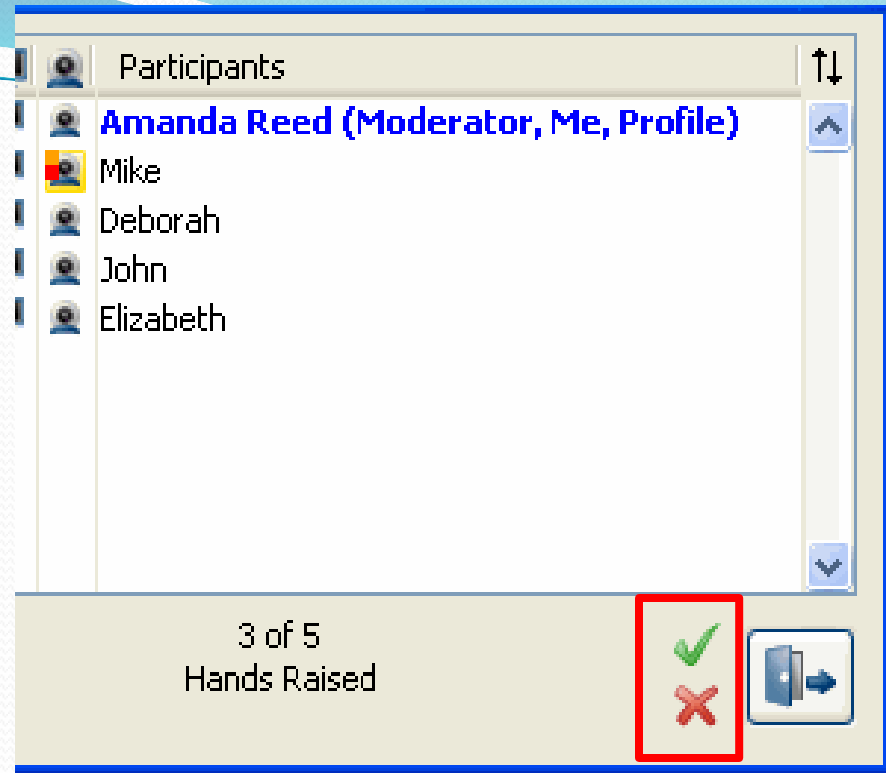
Whiteboard Tools

- Permission to use the Whiteboard 

- Tools



Polling



- Types

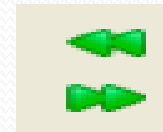
- Yes/No



- Multiple Choice



- Slowdown/Speedup Class Pace



- Responses will appear in the Participants window if the moderator has selected to show them

Elluminate Live!

What's Next ?

Let's start today's [Elluminate Live session](#) and see how it works ...

Illuminate Live!

Session Creation Details ...

You have scheduled the following Illuminate Live! session:

Name: UF/IFAS Caribbean Pest Diagnostic Network Training
Starts: Jun 14, 2010 06:00 AM Eastern (EDT, North America/Canada)
Ends: Jun 14, 2010 03:00 PM Eastern (EDT, North America/Canada)

To join the session, please click on the link below within 60 minutes of the specified time.

Join the [Illuminate Live! Session](#)

To invite others to join the session, e-mail the following link:

<https://sas.illuminate.com/m.jnlp?sid=2010029&password=M.58DFD4B533C31267ECoA65FF7AFoBC>

Illuminate Live!

Session Creation Details ...

To add this Illuminate Live! session to your calendar, please click the following link:

<https://sas.illuminate.com/mvc?sid=2010029&miuid=79A38908A908EF972679316AA6AE576>

Your session may or may not be recorded. To playback recordings associated with the session, please click the appropriate link below:

Recording Link - The direct link to the last recording made in this session.

<https://sas.illuminate.com/mr.jnlp?suid=M.3BCDE596BD38DEB3BA91CBD8E94180&sid=2010029>

Recording Link Table - A formatted table with links to all recordings made in this session.

<https://sas.illuminate.com/mrtbl?suid=M.3BCDE596BD38DEB3BA91CBD8E94180&sid=2010029>

Recording Link List - A text list with links to all recordings made in this session.

<https://sas.illuminate.com/mrlst?suid=M.3BCDE596BD38DEB3BA91CBD8E94180&sid=2010029>

Becoming an Elluminate Live! Moderator ...

SAS is a management platform for Elluminate. It's a backend program that will support our use of Elluminate. The UF Elluminate community has decided to move to SAS as its preferred platform for creating Elluminate user accounts, scheduling Elluminate sessions, housing recordings, running reports on usage, etc.

If you don't have an account in SAS or if you have additional questions about the SAS , you'll want to contact mediahelp@cop.ufl.edu.

You can also visit the SAS training resources available on Elluminate's website:
http://www.lluminate.com/Services/Training/Administrative_Documentation/?id=359

Getting Started as an Elluminate Live! Moderator ...

Getting Started with Elluminate Live! for Moderator
(3) YouTube videos ...

[Part 1](#)

[Part 2](#)

[Part 3](#)



Want to learn more?

And collaborate with other Elluminate Users Worldwide

Learning Central

... Elluminate's Social Networking Site

Recorded Demonstrations and Events

Sample of Events for Playback ...

Event Name	Hosted By	Date Recorded	Cost	
Event Type: Webinar				
Elluminate Live! V10 – Sneak Peek	Valerie Schreiner	2010-06-09	Free	Play
Lead Your Learning Organization To Improve Results, Cut Costs And Prepare For The Road Ahead	TMN: Steve Rosenbaum, Arupa Tesolin and Ira Kasdan	2010-06-08	Free	Play
How Sales Training Becomes Lasting Change In Sales Behavior	Bill Stinnett	2010-06-04	Free	Play
Story-Based Elearning: Adding Vitality, High Learning And Engagement	TMN: Ray Jimenez	2010-06-02	Free	Play
Real World Approaches For Formalizing Informal Learning	TMN: Lance Dublin	2010-06-01	Free	Play
Learning Project Charter In 45 Minutes? It's Important And Can Be Done!	TMN: Lou Russell	2010-05-20	Free	Play
Elluminate Product Spotlight: Elluminate Bridge For Sakai	Rick Ruden and Steve Schoen	2010-05-20	Free	Play
Doing More With Less: How Elluminate Can Help You	Zemina Hasham	2010-05-18	Free	Play
How To Create No Lecture Webinars	TMN: Ray Jimenez	2010-05-12	Free	Play
Formalizing Informal Learning: When And How	Lance Dublin	2010-05-12	Free	Play
Leveraging Student/ Faculty Assessments To Improve Student Success	Lou Russell	2010-05-10	Free	Play



Coming Soon ...

[Elluminate Live! V10 – Sneak Peek](#)

Thank you!

Please contact me with any questions at ...

Kurt S. Rowe

University of Florida / IFAS

Florida-Friendly Landscaping™ Program

Web Designer / IT Specialist

6700 Clark Road

Twin Lakes Park

Sarasota, FL 34241

☎ (941) 232-8420

✉ ksrsrq@ufl.edu

Technical Support Meeting Room: [Elluminate](#)

Adobe's ConnectNow at: <https://connectnow.acrobat.com/ksrsrq>